



Southern Sentinel Observing Session Notes

Observing Session - Tuesday 27th May 2003

Date: 27 May 2002 (Local)
Time: 2100-2330 NZDT (UT +12)
Location: Symes Rd, Maramaura Forest, North Waikato.
60 Minutes From Home.
Weather: Clear, Cool with Occasional Mist. Calm conditions.
Seeing: Limiting Magnitude 5.5, transparency 3.5/5, seeing 4.5/5
Moon: No Moon (Waning Moon)
Equipment: 13.1" F5 Dob with Paracorr, TeleVue Eyepieces, UHC Filter

While the day did not seem to indicate that any observing could be done, the evening brought clear skies although mist was probably going to be a problem in the Waikato, if we went in that direction.

Dave Moorhouse, Guy Thornley and I decided to go for it. Packing the car and traveling south the skies were clear, but as predicted the North Waikato was misty in patches and all the way up to the forest. The mist cleared as we traveled up to the locked gate at Symes Rd. This was good news as we knew that the mist would only get worse as the evening cooled.

We setup and started observing at 9PM. The skies were very still and the southern aspect was very dark. Mist rolled in and out from time to time but the sky conditions were better than expected. Two and a half good hours were had at the scope and hopefully more to come in the upcoming long weekend.

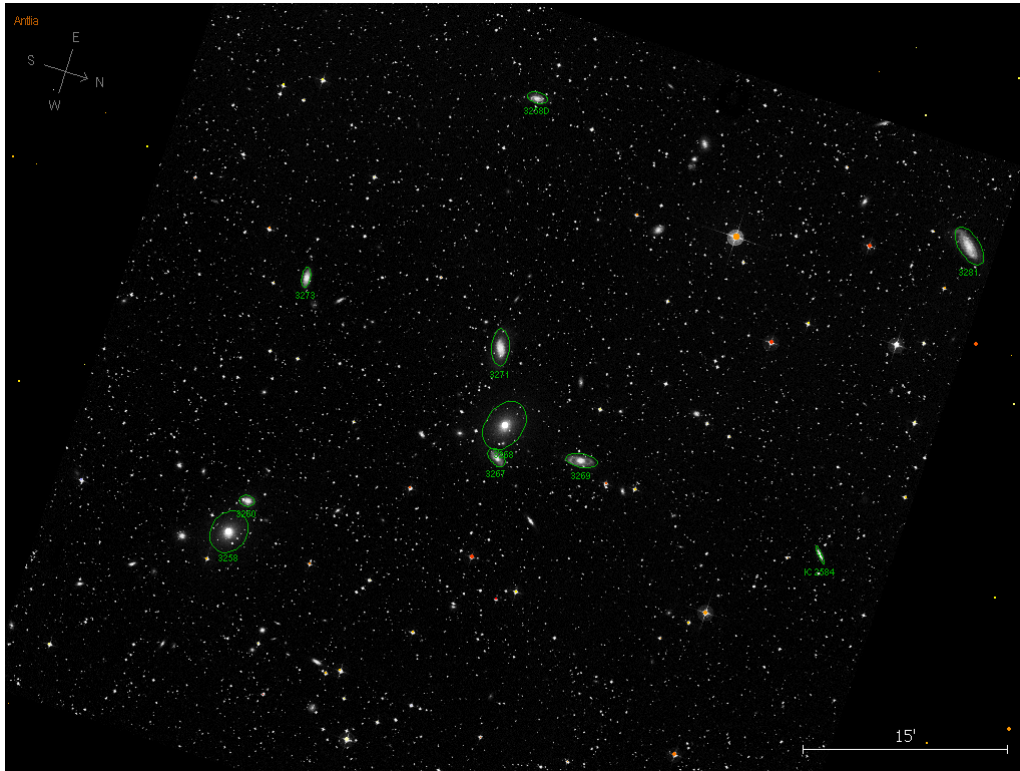
Objects seen were;

Object	Type	Altitude	Magnification	Eyepiece
NGC 4900	Galaxy	50.6°	114x	TeleVue 17mm Nagler Type 4
NGC 4546	Galaxy	56.3°	114x	TeleVue 17mm Nagler Type 4
PK 290+ 7.1	Planetary Nebula	65.5°	114x	TeleVue 17mm Nagler Type 4
NGC 3358	Galaxy	59.8°	114x	TeleVue 17mm Nagler Type 4
NGC 3354	Galaxy	59.7°	114x	TeleVue 17mm Nagler Type 4
NGC 3347A	Galaxy	59.2°	114x	TeleVue 17mm Nagler Type 4
NGC 3347	Galaxy	59.6°	114x	TeleVue 17mm Nagler Type 4
NGC 3281A	Galaxy	49.0°	114x	TeleVue 17mm Nagler Type 4
NGC 3281	Galaxy	48.9°	114x	TeleVue 17mm Nagler Type 4
NGC 3273	Galaxy	48.9°	114x	TeleVue 17mm Nagler Type 4
NGC 3271	Galaxy	48.8°	161x	TeleVue 12mm Nagler Type 2
NGC 3269	Galaxy	48.7°	161x	TeleVue 12mm Nagler Type 2
NGC 3268	Galaxy	48.7°	114x	TeleVue 17mm Nagler Type 4
NGC 3267	Galaxy	48.7°	114x	TeleVue 17mm Nagler Type 4
NGC 3260	Galaxy	48.6°	114x	TeleVue 17mm Nagler Type 4
NGC 3258D	Galaxy	49.1°	114x	TeleVue 17mm Nagler Type 4
NGC 3258C	Galaxy	48.9°	114x	TeleVue 17mm Nagler Type 4
NGC 3258	Galaxy	48.6°	114x	TeleVue 17mm Nagler Type 4
NGC 3257	Galaxy	48.6°	114x	TeleVue 17mm Nagler Type 4
IC 2587	Galaxy	48.7°	114x	TeleVue 17mm Nagler Type 4
IC 2584	Galaxy	48.5°	114x	TeleVue 17mm Nagler Type 4
PK 329+ 2.1	Planetary Nebula	68.0°	114x	TeleVue 17mm Nagler Type 4
NGC 6362	Globular Cluster	49.5°	114x	TeleVue 17mm Nagler Type 4
NGC 6221	Galaxy	56.8°	114x	TeleVue 17mm Nagler Type 4
NGC 6215	Galaxy	57.0°	114x	TeleVue 17mm Nagler Type 4

(CONTINUED ON PAGE 2)

NGC 5946	Globular Cluster	70.6°	114x	TeleVue 17mm Nagler Type 4
IC 4499	Globular Cluster	44.6°	114x	TeleVue 17mm Nagler Type 4

Various objects were logged but one small and one large galaxy cluster in Antila was observed for over 60 minutes. So much to see in such a small region. I will return to this area for further examination of the individuals in each cluster.



Large Antila Cluster with DSS Image

Tough objects ; Some of the small galaxies in the Antila clusters.

Memorable objects ; Large Antila Cluster.

Cheers.

Paul Kemp
 13.1" Reflector
 Auckland, New Zealand
 36° 55' 16" South, 174° 43' 30" East

-- The Southern Sentinel --