



Southern Sentinel Observing Session Notes

Observing Session - Tuesday 8th October

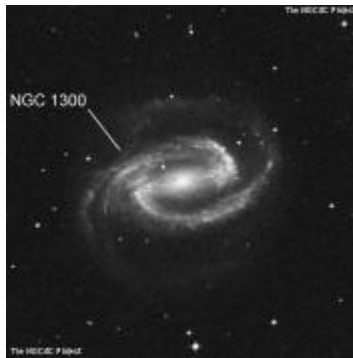
Observing Session - Tuesday 8th October

Date: 08 Oct 2002 (Local)
 Time: 0410-0520 NZDT (UT +13)
 Location: Cornwallis Regional Park, Auckland
 25 Minutes From Home.
 Weather: Cool, Clear and Calm conditions, No Cloud.
 Seeing: Limiting Magnitude 5.0, transparency 3.5/5, seeing 3/5
 Moon: No Moon (New Moon)
 Equipment: 13.1" F5 Dob with Paracorr, TeleVue Eyepieces, UHC Filter

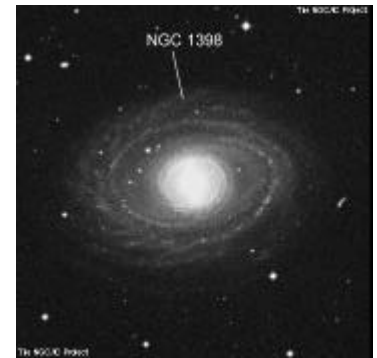
I decided, due to the weather currently up in the North Island of New Zealand, I would do a morning observing session to take advantage of no wind, no moon & no clouds. The three most important things for driving anywhere to observe. With the conditions excellent I took a drive out to Cornwallis Regional Park, just 25 minutes from home. Fortunately the gates were open and not shut, which is always a concern when going observing in the evening. Being locked would be a real pain. Even if the gates were closed after 4 AM I only had to wait a few hours anyway if someone did lock them. I had no problems when I left at 4:25 as the twilight started to take effect.

No interruptions and conditions made observing pleasant. Observed for 70 minutes.

Concentrated in a small area of the sky in the Eridanus and Fornax region about 15 degrees north of the main Eridanus and Fornax galaxy cluster. Continued logging "Best of NSOG" Objects and finished with a few Herschel 400 Objects.



NGC1300



NGC1398

Objects seen were;

| Object | Type | Altitude | Magnification | Eyepiece |
|----------|--------|----------|---------------|----------------------------|
| NGC 1421 | Galaxy | 65.9° | 114x | TeleVue 17mm Nagler Type 4 |
| NGC 1325 | Galaxy | 71.0° | 114x | TeleVue 17mm Nagler Type 4 |
| NGC 1332 | Galaxy | 71.1° | 114x | TeleVue 17mm Nagler Type 4 |
| NGC 1315 | Galaxy | 70.7° | 114x | TeleVue 17mm Nagler Type 4 |
| NGC 1300 | Galaxy | 67.8° | 114x | TeleVue 17mm Nagler Type 4 |
| NGC 1297 | Galaxy | 67.5° | 114x | TeleVue 17mm Nagler Type 4 |
| NGC 1398 | Galaxy | 76.0° | 114x | TeleVue 17mm Nagler Type 4 |
| NGC 1425 | Galaxy | 79.1° | 114x | TeleVue 17mm Nagler Type 4 |
| NGC 1406 | Galaxy | 79.5° | 114x | TeleVue 17mm Nagler Type 4 |
| NGC 1407 | Galaxy | 68.0° | 114x | TeleVue 17mm Nagler Type 4 |
| NGC 1400 | Galaxy | 68.0° | 114x | TeleVue 17mm Nagler Type 4 |
| NGC 1394 | Galaxy | 67.6° | 114x | TeleVue 17mm Nagler Type 4 |
| NGC 1393 | Galaxy | 67.6° | 114x | TeleVue 17mm Nagler Type 4 |
| NGC 1383 | Galaxy | 67.4° | 114x | TeleVue 17mm Nagler Type 4 |
| NGC 1440 | Galaxy | 68.3° | 114x | TeleVue 17mm Nagler Type 4 |

| | | | | |
|----------|--------------|-------|------|----------------------------|
| NGC 1452 | Galaxy | 68.6° | 114x | TeleVue 17mm Nagler Type 4 |
| NGC 908 | Galaxy | 55.8° | 114x | TeleVue 17mm Nagler Type 4 |
| NGC 1647 | Open cluster | 34.0° | 114x | TeleVue 17mm Nagler Type 4 |

Again the observing was done with 17mm Nagler Type 4. Nice FOV and magnification makes this eyepiece suited for deepsky work. A little extra weight is required in the back of the scope to make best use of the fairly heavy Nagler.

Tough objects ; None.
Memorable objects ; NGC1398 & NGC1300 galaxies. The extended group of galaxies which surround NGC1407.

Cheers.

Paul Kemp
13.1" Reflector
Auckland, New Zealand
36° 55' 16" South, 174° 43' 30" East

-- The Southern Sentinel --